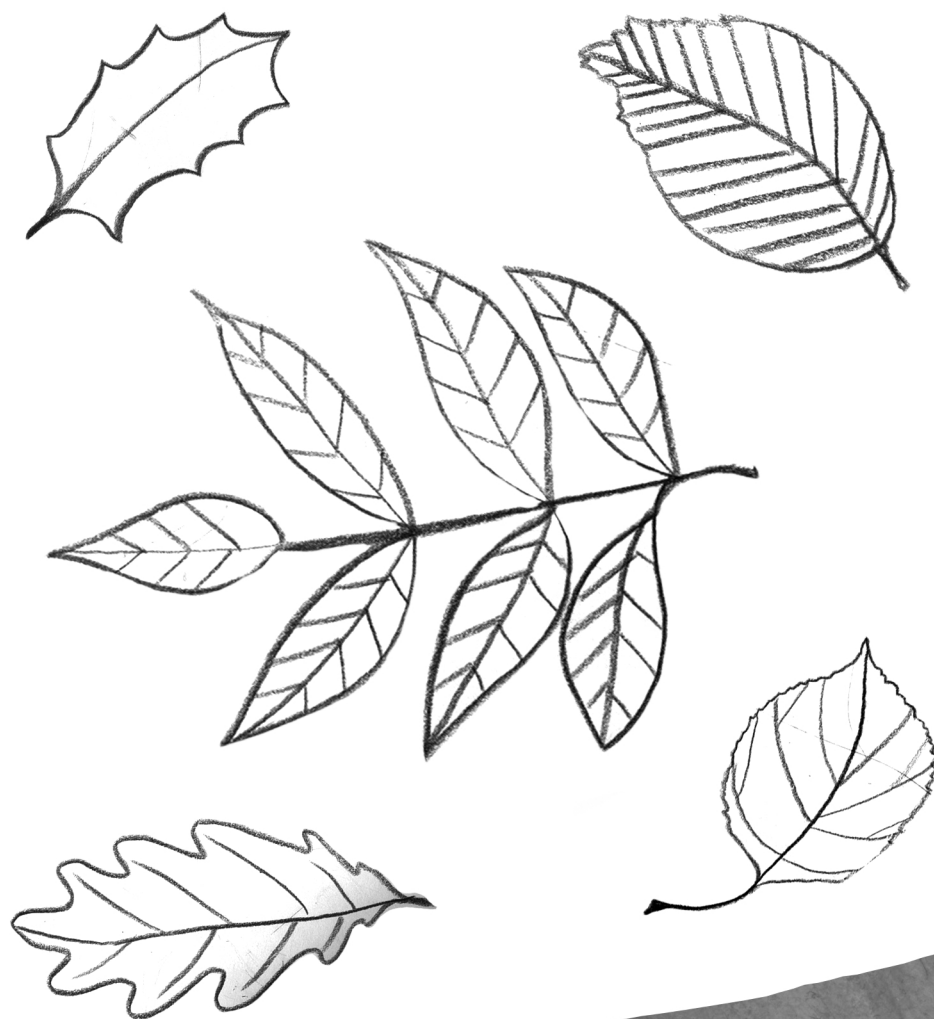
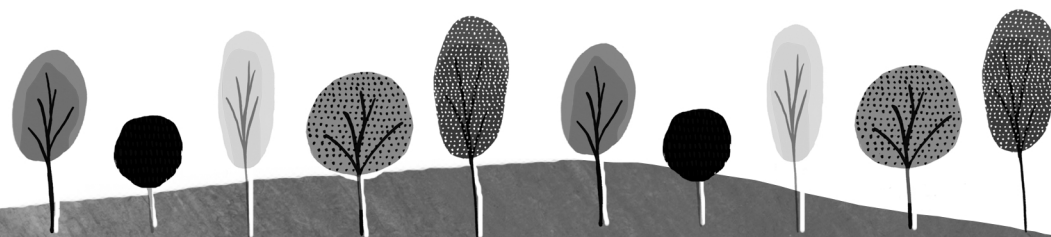


Which trees do these leaves belong to?  
What colour are they?



# TREES

## OF GLENROTHES



HOLLY

ASH

OAK

ASPEN

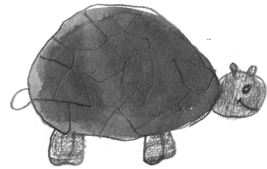
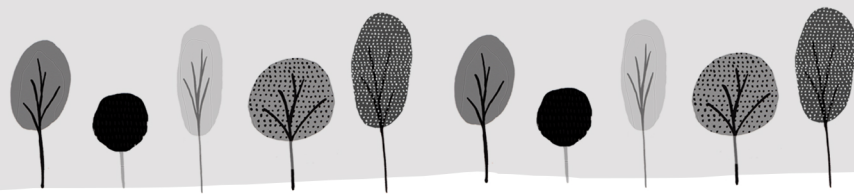
BEECH

RE  
IMAGI  
NATION

Glenrothes  
17-19 May

[booked.edbookfest.co.uk](http://booked.edbookfest.co.uk)  
ReimagiNation

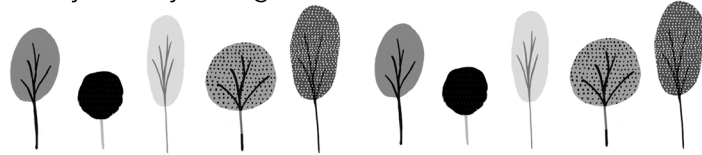
Booklets designed in partnership between Edinburgh  
International Book Festival and Edinburgh College of Art.  
Download all versions at [learning.edbookfest.co.uk](http://learning.edbookfest.co.uk)  
For more on ReimagiNation, see [booked.edbookfest.co.uk](http://booked.edbookfest.co.uk)



Hello!

We are all the little wood creatures living in the forests of Scotland. We like it in Glenrothes especially, because here, it is a beautifully green town, with lots and lots of trees around, especially in Riverside park. We have found all sorts of trees, like the birch, the oak or the ash tree. We've even found metal trees! They are part of one of Malcom Robertsons sculptures, which is called 'Forest Screens'. You can find it close to the giant Irises at the Leslie roundabout. You might go on a stroll to visit us, the trees and the sculpture.

And on your way there, you might have a think about wishes...

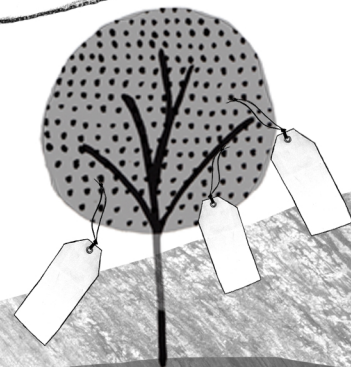
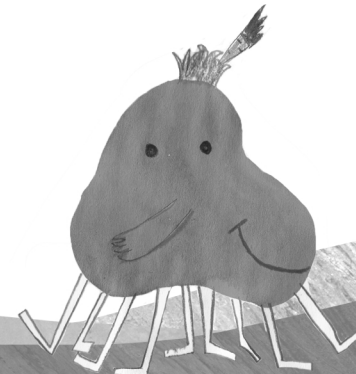
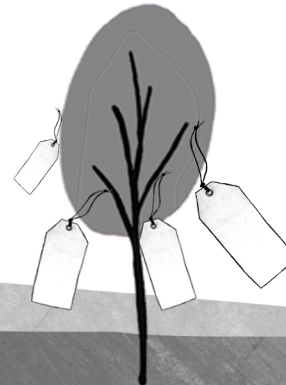
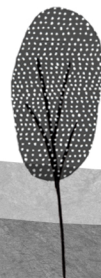


We'll tell you a secret:

In Scotland, there is a long tradition of something called a wish tree. For hundreds of years people have been attaching things to trees to make wishes in the hopes they might come true.

Well, we are here to read all of them, and sometimes, we help make them true...

You can make a wish! It's simple -



All you need is a pair of scissors, some cloth, some string or some paper, and there you are. Tie your wish to your favourite tree.

What do we wish for?

Beautiful green spaces to live in,

No rubbish left behind...

WHAT'S YOUR WISH?



My wish is...

