



Edinburgh
International
Book Festival

The Citizen Map of Tollcross



As the Book Festival moves to its new location at Edinburgh College of Art, we wanted to find out more about the area from local people who live, work and have grown up here. Communities Writer in Residence Eleanor Thom, in collaboration with photographer Alicia Bruce, has recorded some of their reflections, memories and connections to the area, which you can listen to by scanning the QR code below.

Head to ontheroad.edbookfest.co.uk to find out more about the project.

Scan with your phone
or visit ontheroad.edbookfest.co.uk



1 Central Hall

The Café at Central Hall is a hub for the local community. Michele is a volunteer at the café. Here she shares the story of how the community supported her during the time of Covid, and what it means to her to now be able to care for others in need of support.

2 'Picture This' Photo Shop

While it's now home to an estate agent, 12 Home Street used to be a photo developers. Here, Angela tells us how an infamous secret album got her and her colleagues in deep trouble. We also hear her Tollcross love story: how she met her partner James 18 years ago.

3 The Old Wash House

Carol-Ann grew up in the Tollcross area, and here she shares memories of the community she knew in childhood. In particular, she remembers visiting the wash house or 'steamie'. You can still see the remnants of the white tiles opposite the playground of Tollcross Primary School.

4 Cameo Picturehouse

The iconic Cameo cinema was built in 1914 and is one of the oldest cinemas still in operation in Scotland today. Kelly is the General Manager, and here she reflects on her love of old cinema, from her childhood in Kansas to the Cameo today.



5 Edinburgh College of Art

Nancy is a receptionist at Edinburgh College of Art, and has watched countless different artistic experiments evolve over the years. She reminisces about the many projects she's been involved in, from acting as a mean mother in a film screened at a graduation show, to having her photograph on a poster pasted under one of the bridges in nearby Cowgate.

6 Quick & Plenty Café

The Quick & Plenty Café has been in Johnny's family for 50 years. The café was so important to his mum, that when she sadly passed away, Johnny decided to run it, even though he didn't quite know how. Johnny's story is about his own journey, but also describes the varied cast of characters that have stopped by for some 'Quick & Plenty' refreshment over the years. You might even recognise one of the names...

7 Khartoum Café

Omar has lived in Edinburgh for 27 years, and established Khartoum Café with his brother in the 1990s. The East African café is a local community hub, and here he tells us the story behind the café's name and its logo.



Scan to listen!

1



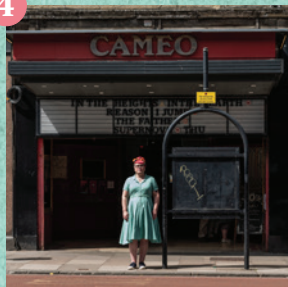
2



3



4



5



6



7



The Citizen Map of Tollcross

ontheroad.edbookfest.co.uk

We are grateful to Michele, Angela, James, Carol-Ann, Kelly, Nancy, Johnny and Omar for sharing their stories. The project was facilitated by Eleanor Thom, Citizen Writer in Residence, with photography © by Alicia Bruce www.aliciabruce.co.uk. Citizen is Edinburgh International Book Festival's long-term creative programme working in partnership with organisations, schools and community groups across Edinburgh and Musselburgh. It offers local people a platform to explore identity, connection and place through poems, songs and reflective writing. The project is supported by players of People's Postcode Lottery and through the PLACE Programme (funded by the Scottish Government, City of Edinburgh Council, and the Edinburgh Festivals, and supported and administered by Creative Scotland). Find out more about the Book Festival's Communities Programme at ontheroad.edbookfest.co.uk

Edinburgh
International
Book Festival

Essential to Scotland
**PEOPLE'S
POSTCODE
LOTTERY**

Adopted locally trust
**POSTCODE
CULTURE
TRUST**

• EDINBURGH •
THE CITY OF EDINBURGH COUNCIL


The Scottish
Government
Established in 1707

CREATIVE
LAND
ALBA | CHRUTHACHAIL